

VI Package Manager

VI Package Manager (VIPM) is a community and tool that helps you find, download, create, share, & manage LabVIEW Add-ons.



HSE Internal: [How to create a new package](#)

Resources

- <https://vipm.io>
- <https://vipm.io/desktop/versions/>
- <https://forums.vipm.io>

FAQ

Package Cache

The downloaded VI packages can be found at

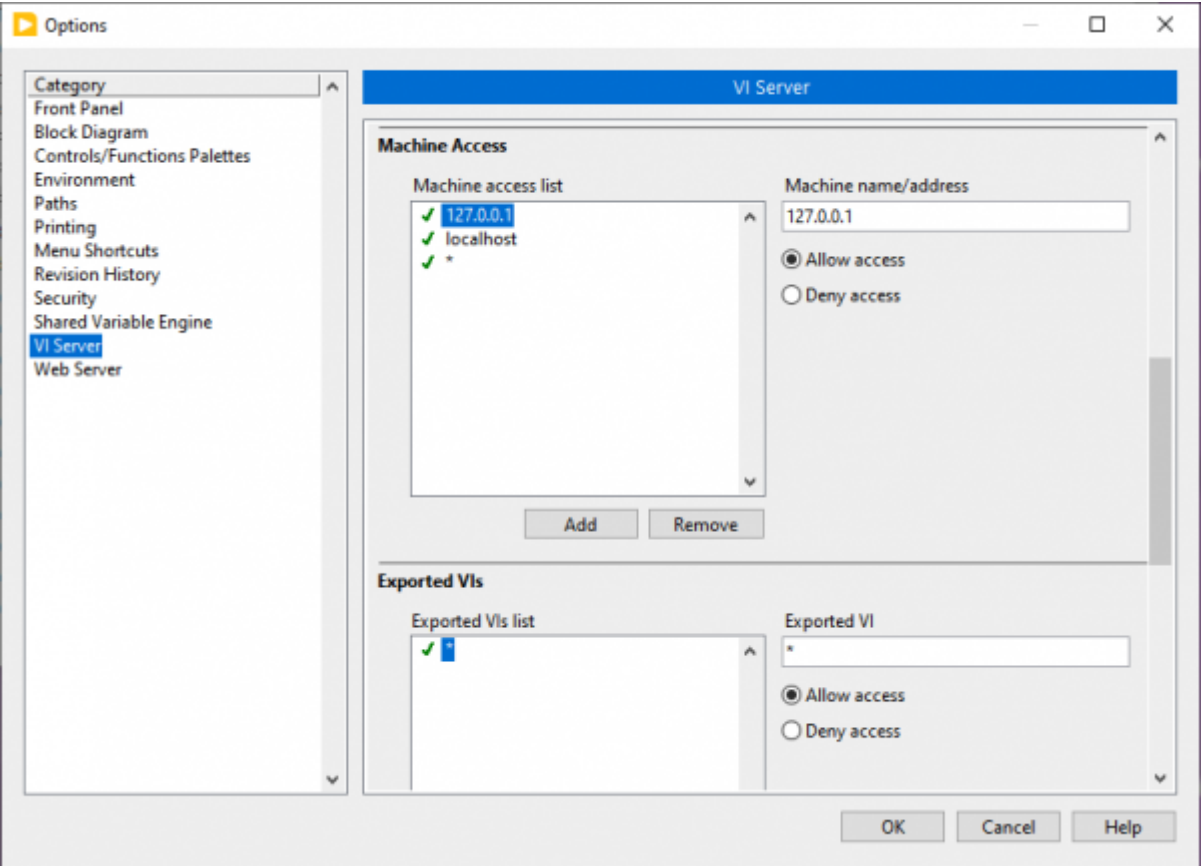
```
<ProgramData>\JKI\VIPM\cache
```

Custom Actions

You can define VIs to be called during install/uninstall, so-called custom actions. I've tried to copy zip files to C:\ProgramData\Hampel Software Engineering\PPLs instead of installing them into vi.lib and it turned out, that the Post-Install Custom Action is executed before the files were extracted!

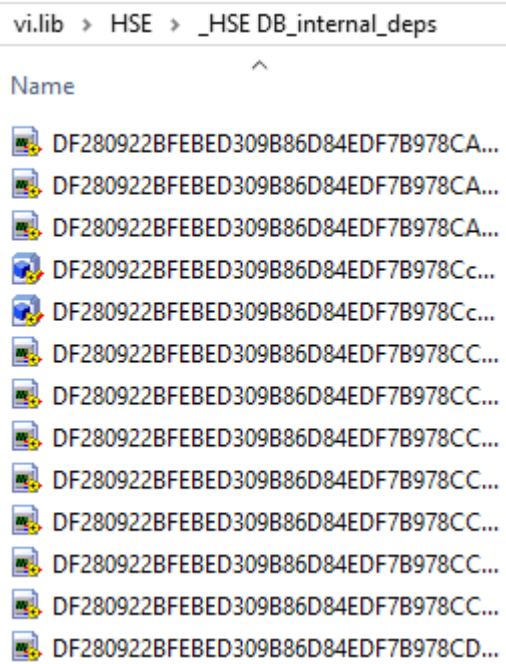
Connecting to LabVIEW

VIPM connects to LabVIEW via the VI-Server TCP port (default: 3363). If experiencing problems, make sure to adhere to the settings as described on [this KB page](#).



internal_deps

When VIP Builder thinks he needs to add dependencies, a folder in vi.lib next to the installation folder will be created like this:



I was able to solve it, be opening the .vipb file and refreshing the dependency list.

Looking at the .vipb with notepad++ showed changes in this entries, but I couldn't follow the logic.

```
<Advanced_Settings>
  <Package_Dependencies>
    <External_Dependencies>...</External_Dependencies>
    ...
    <Direct_Dependencies>...</Direct_Dependencies>
  </Package_Dependencies>
```

Linux

Download

- [Latest Official Release](#)
- [VIPM 2023 Q3 Release Candidate for Linux](#)

Installation

[To prevent the too many files open issue](#)

```
$ sudo nano /etc/sysctl.conf
$ fs.file-max = 2000000
$ sudo sysctl -p
```

Restart your system or re-login.

Create two folders

```
$ sudo mkdir -p /usr/local/JKI/VIPM
$ sudo mkdir /etc/JKI
```

Change the owner of the folders to your current user, to gain write access (not needed, if sudo is used later)

```
$ sudo chown $USER -R /usr/local/JKI/VIPM
$ sudo chown $USER /etc/JKI
```

Unzip to the new folder

```
$ unzip vipm-22.1.2354-linux.zip -d /usr/local/JKI/VIPM/
```

Usage

VIPM needs write permission to the LabVIEW installation. Because LabVIEW is usually installed under `/usr/local/natinst/` the normal user has no write access and VIPM needs to be executed as user "root". To do this on modern linux systems, it is recommended to use the command `sudo` or

pkexec. Examples

```
$ sudo /usr/local/JKI/VIPM/vipm
```

If this command returns an error "Unable to open x display", it is necessary to provide the environment variables to access the x display.

```
$ pkexec env DISPLAY=$DISPLAY XAUTHORITY=$XAUTHORITY  
/usr/local/JKI/VIPM/vipm
```

To start vipm with `sudo vipm`, you can create a symbolic link with this command

```
$ sudo ln -s /usr/local/JKI/VIPM/vipm /usr/bin/vipm
```

Alternative: Change the owner of the LabVIEW folder to your current user, to gain write access and don't need sudo.

```
$ sudo chown $USER -R /usr/local/natinst/
```

From:

<https://dokuwiki.hampel-soft.com/> - **HAMPEL SOFTWARE ENGINEERING**

Permanent link:

<https://dokuwiki.hampel-soft.com/kb/labview/tools/vipm>

Last update: **2025/01/15 17:20**

