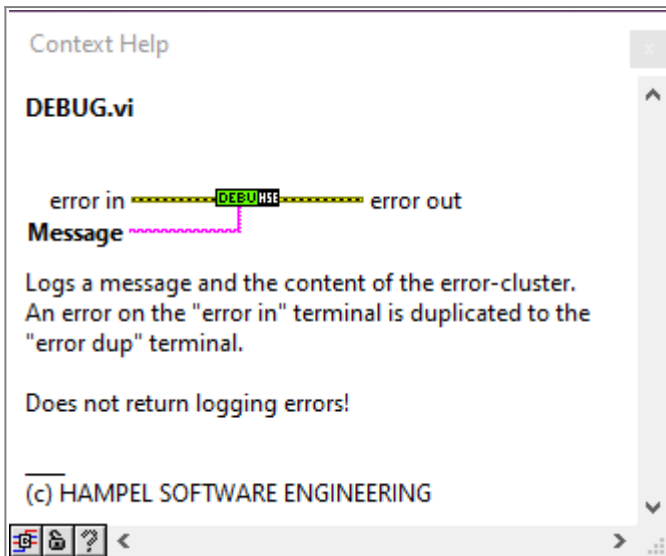


13 Comfort VIs

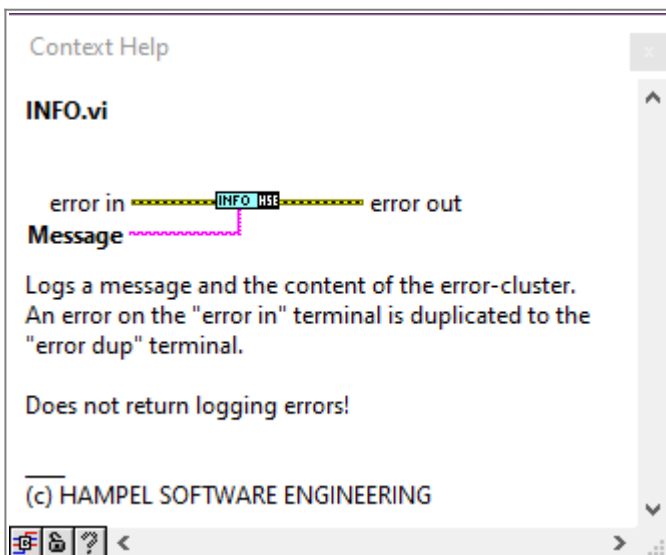
The HSE Logger is based on an object-oriented architecture, so you can instantiate any number of logging objects and wire them as you see fit.

Additionally, the HSE Logger comes with a “comfort feature”: You can instantiate a global logging object and use the *Comfort VIs* in your code. This eliminates the need for wiring the logging object into all the places you want to augment with logging. See the [Example](#) for more details on this.

DEBUG




INFO



WARNING

Context Help

WARNING.vi

error in  error dup

Message

Logs a message and the content of the error-cluster.
An error on the "error in" terminal is duplicated to the "error dup" terminal.

Does not return logging errors!


(c) HAMPEL SOFTWARE ENGINEERING

Navigation icons: Home, Lock, Help, Back, Forward, More

ERROR

Context Help

ERROR.vi

error in  error out

Message

Logs a message and the content of the error-cluster, if "error in" is True.
An error on the "error in" terminal is cleared on the "error out" terminal.


(c) HAMPEL SOFTWARE ENGINEERING

Navigation icons: Home, Lock, Help, Back, Forward, More

CRITICAL

Context Help

CRITICAL.vi

error in  error out

Message

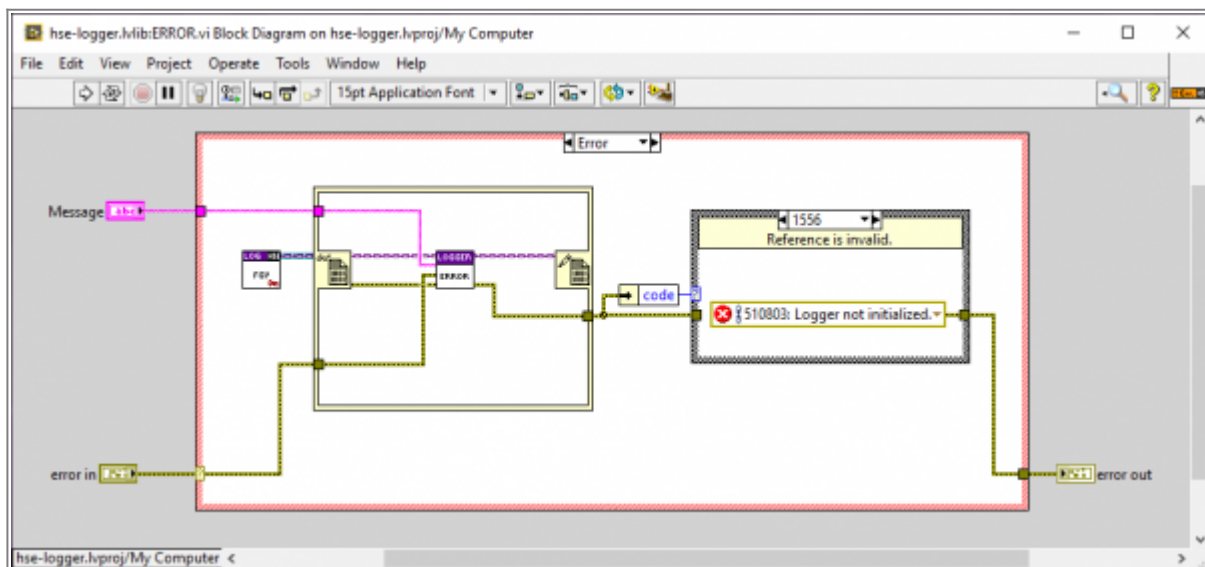
Logs a message and the content of the error-cluster, if "error in" is True.
An error on the "error in" terminal is cleared on the "error out" terminal.

(c) HAMPEL SOFTWARE ENGINEERING

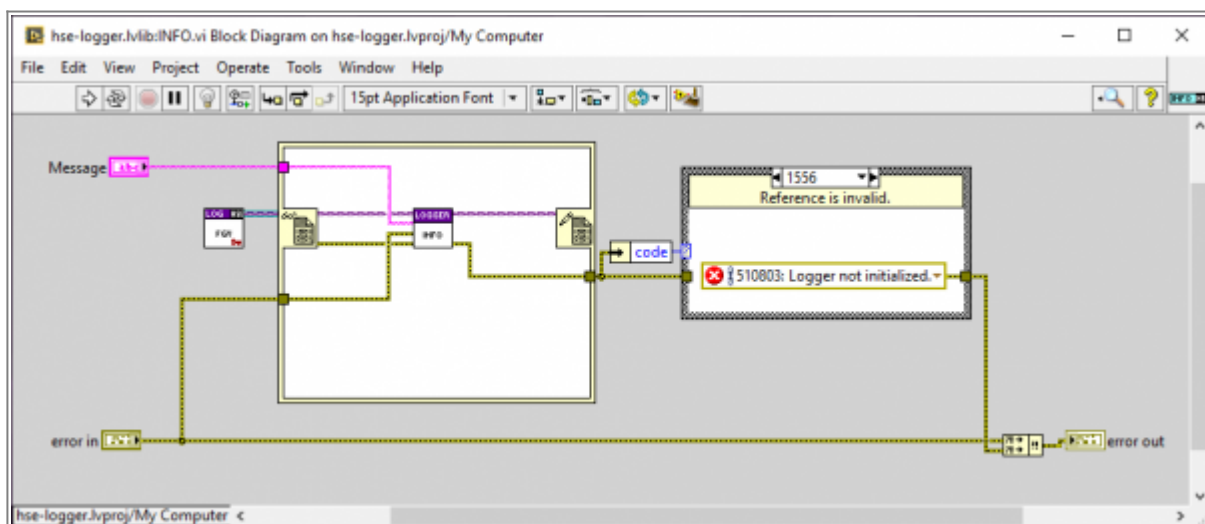
Navigation icons: Home, Lock, Help, Back, Forward, More

Error Handling

ERROR and CRITICAL will only log in case of error:



DEBUG, INFO and WARNING will always create a log entry:



From:

<https://dokuwiki.hampel-soft.com/> - **HAMPEL SOFTWARE ENGINEERING**

Permanent link:

<https://dokuwiki.hampel-soft.com/code/open-source/hse-logger/comfort-vis>

Last update: **2024/01/12 09:57**

