

03 FAQ

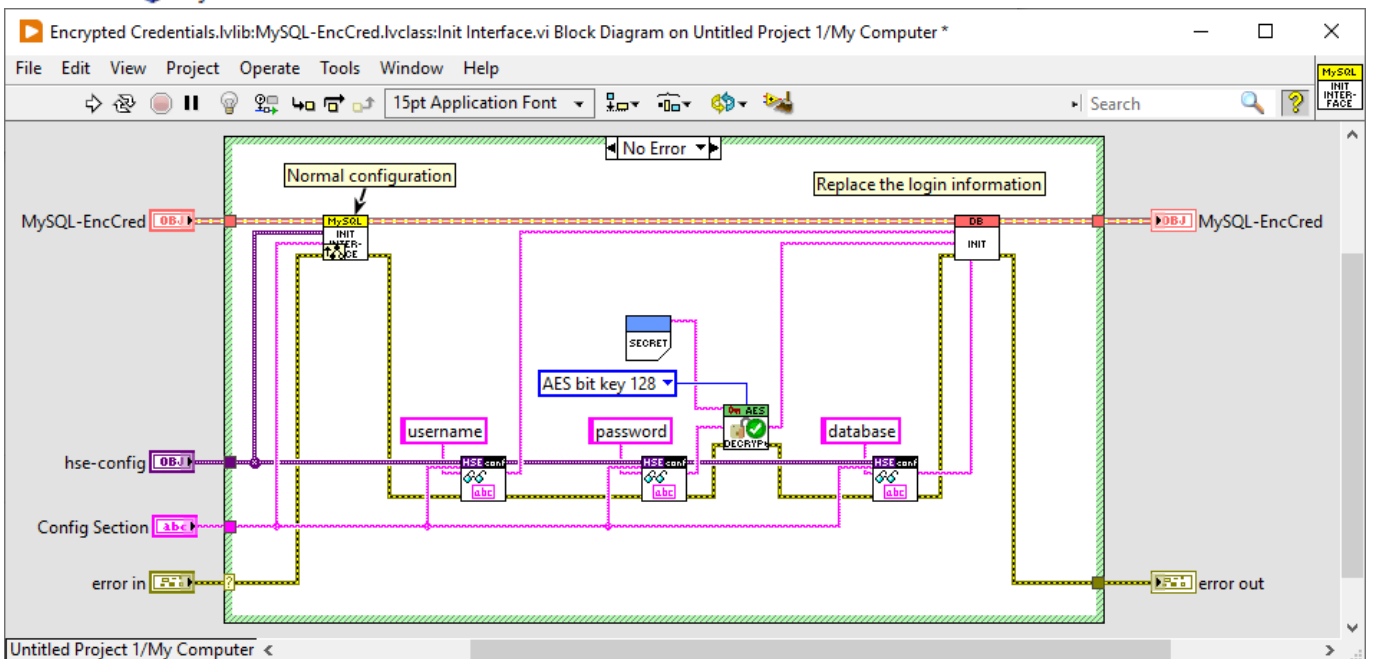
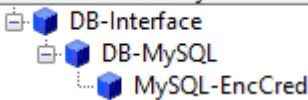
Upgrade Instructions

- See [98 Upgrade Instructions](#)
- create a subclass of DB-Interface and add decryption in Init Interface override

How can I encrypt my credentials in the config file?

- read about [AES encryption](#)
- create a subclass of DB-Interface
- add decryption before calling the parent's Init method

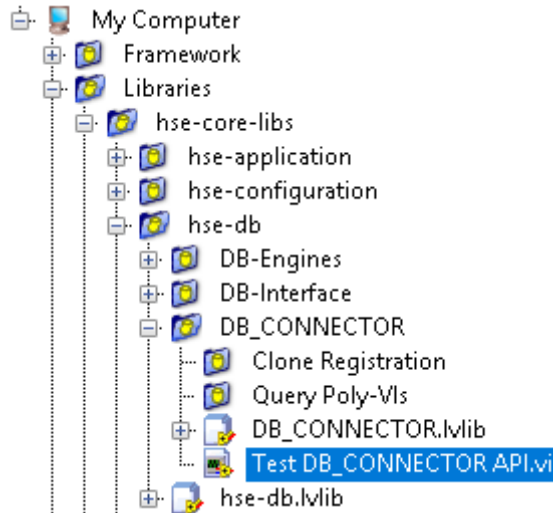
Parent Class Hierarchy



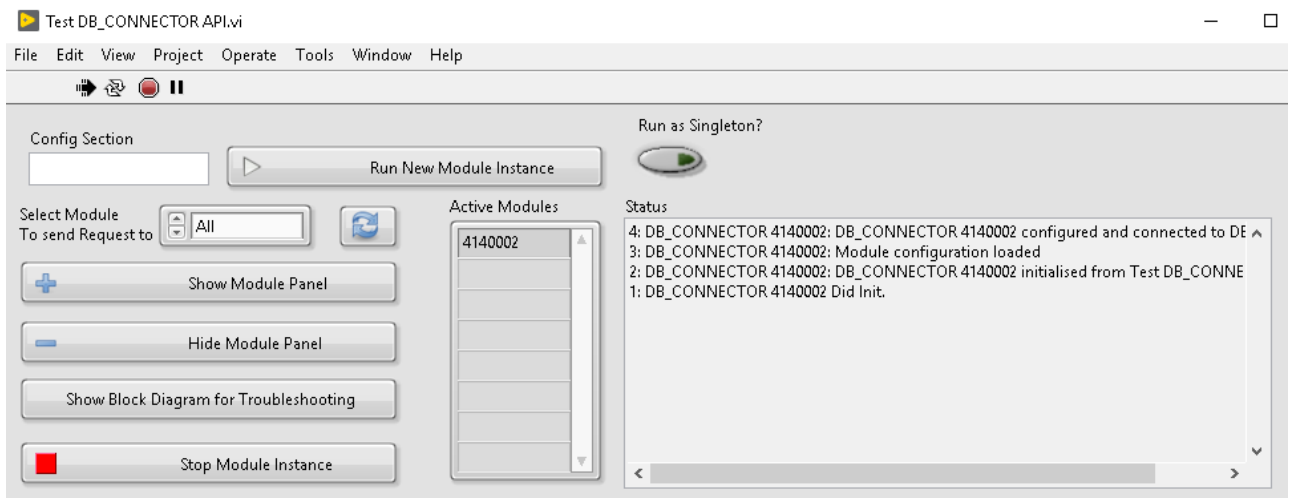
Advanced usage in subVI

If you want to access a database from a SubVI of a larger DQMH module, but you don't want to start the entire module, there's an easy way to get a DB-Connector running in the SubVI without starting the whole project:

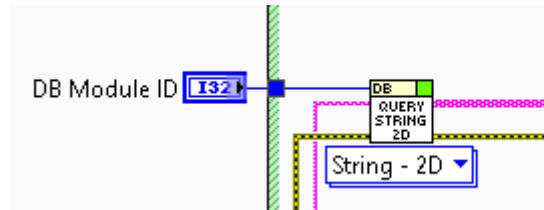
1. Configure DB-Connector in your project
2. Open "Test DB-Connector.vi" and run



3. Press “Run New Module Instance”



4. Your SubVI should already look somewhat like this:



- 5. Copy value from “Active Modules” to your SubVI “DB Module ID” front panel element and run. The DQMH request VIs send commands to the running instance of DB-Connector
- 6. When done, use “Stop Module Instance” in DB-Connector and close your SubVI.

From: <https://dokuwiki.hampel-soft.com/> - **HAMPEL SOFTWARE ENGINEERING**

Permanent link: <https://dokuwiki.hampel-soft.com/code/open-source/hse-db/faq>

Last update: **2024/02/09 15:14**

