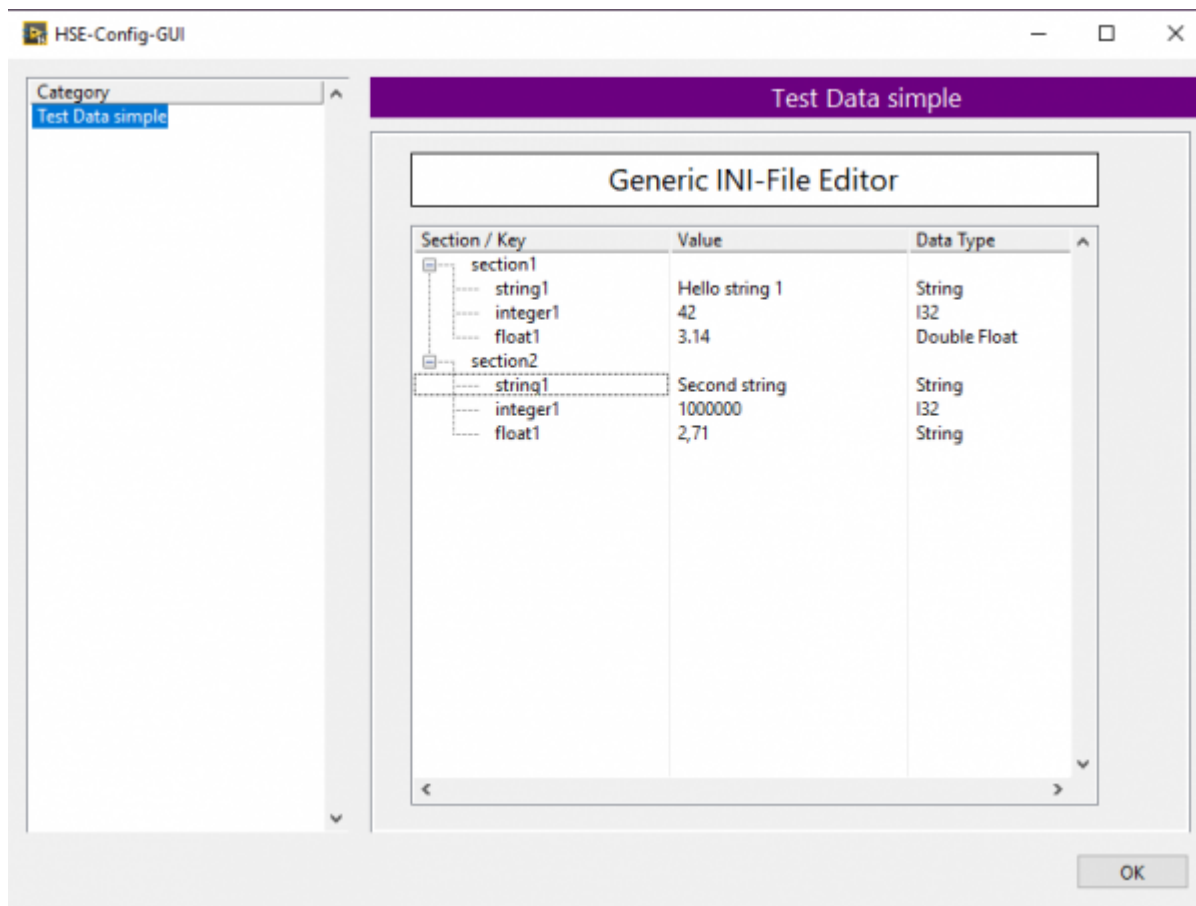


HSE Config Editor

A graphical configuration editor for INI-files. Expandable with own config modules to any other config source and UI needs.

- A common GUI to display specific configuration modules.
- Ready to use configuration module for INI-files.
- Fast development of specific configuration modules.



Source Code



The source code (non-public!) can be found at <https://code.hampel-soft.com/commercial/hse-config-editor>

Structure



These libraries build (on) our standard structure:
[10 Repo Structure](#)

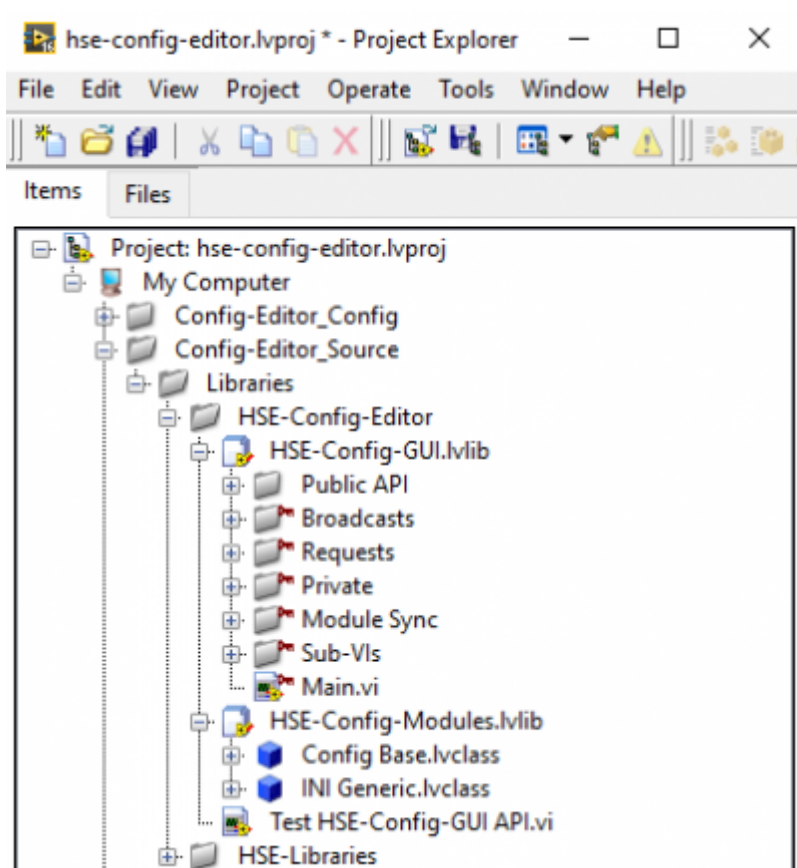


Usage

The design is inspired by the LabVIEW “Options...” dialog and provides a flexible way to display and manipulate configurations. The main window (“HSE-Config-GUI”) is a DQMH module and provides requests and broadcast to interact with them from other parts of a LabVIEW application.

Each config category (the list on the left) is represented by an instance of a “Config Class”. Every specific “Config Class” inherits from `Config Base.lvclass`, which provides fundamental methods.

For INI-files, we already have a class `INI Generic.lvclass` which allows to display and modify the content of a typical INI-file. For other file types or for a customized representation of the content, it's possible to develop specific subclasses.



Dependencies

- LabVIEW \geq 2016
- DQMH \geq 5.0
- HSE-Libraries \geq 3.3





Please contact us at office@hampel-soft.com if you're interested in our commercial products.

From:

<https://dokuwiki.hampel-soft.com/> - **HAMPEL SOFTWARE ENGINEERING**

Permanent link:

<https://dokuwiki.hampel-soft.com/code/commercial/hse-config-editor>

Last update: **2024/11/22 13:45**

